



**Chapter 1: Introduction to Microsoft
Windows 2000 Server**

Windows 2000 Introduction

Windows 2000 combines the power, stability, and security of Microsoft Windows NT with the user-friendly features of Windows 9.x. The Windows 2000 family includes Professional, Server, Advanced Server, and Datacenter Server. All Windows 2000 operating systems are based on the same fundamental architecture and share similar user interfaces. During the exercises that follow, you will perform several basic tasks that are common to all members of the Windows 2000 family.

Exercise Titles:

- Exercise 1-1: Logging on to Windows 2000 Professional
- Exercise 1-2: Exploring the Windows 2000 Desktop
- Exercise 1-3: Launching Windows 2000 Administrative Tools
- Exercise 1-4: Viewing the Windows 2000 File System

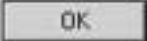
Before You Begin:

- Ensure that your computer is running Windows 2000 Professional.

FACILITATOR'S NOTES

►► Exercise 1-1 **Logging on to Windows 2000 Professional**

In order to start Windows 2000, you will be required to activate the Windows 2000 Security dialog box and enter a valid user name and password. Perform the following steps any time a lab exercise directs you to log on to Windows 2000.

- 1 Boot the Windows 2000 Professional system until the “*Welcome to Windows*” dialogue box appears.
- 2 Simultaneously press the <Ctrl+Alt+Del> keys as instructed by the Welcome to Windows prompt. The *Windows Security* dialog box will be activated.
- 3 Type the following information, and then click :

User Name: **Administrator**

Password: **password (or the password as instructed by the trainer)**

Exercise Summary: Logging on to Windows 2000 Server is essentially the same as logging on to Windows 2000 Professional. Because Windows 2000 is intended to integrate security into its environment, logging on to the system is mandatory to perform local administration. Windows 2000 will run any configured services whether or not a user is logged on locally to the server “console”. A production server should be left at the Welcome to Windows login dialogue (for security reasons) when not actively being configured from the local console.

FACILITATOR’S NOTES

Exercise 1-1: Logging on to Windows 2000 Professional

Some schools may chose to enroll students into Windows 2000 Server as the first course. Ensure that students have some familiarity with the modern Windows interface. The following exercises are intended to assist students who are relatively new to Windows.

►► Exercise 1-2 Exploring the Windows 2000 Desktop

Understanding the Windows 2000 environmental nomenclature is important to understanding directions and lab exercises.

Commit the following elements to memory (Figure 1-1); they will be important throughout this course:

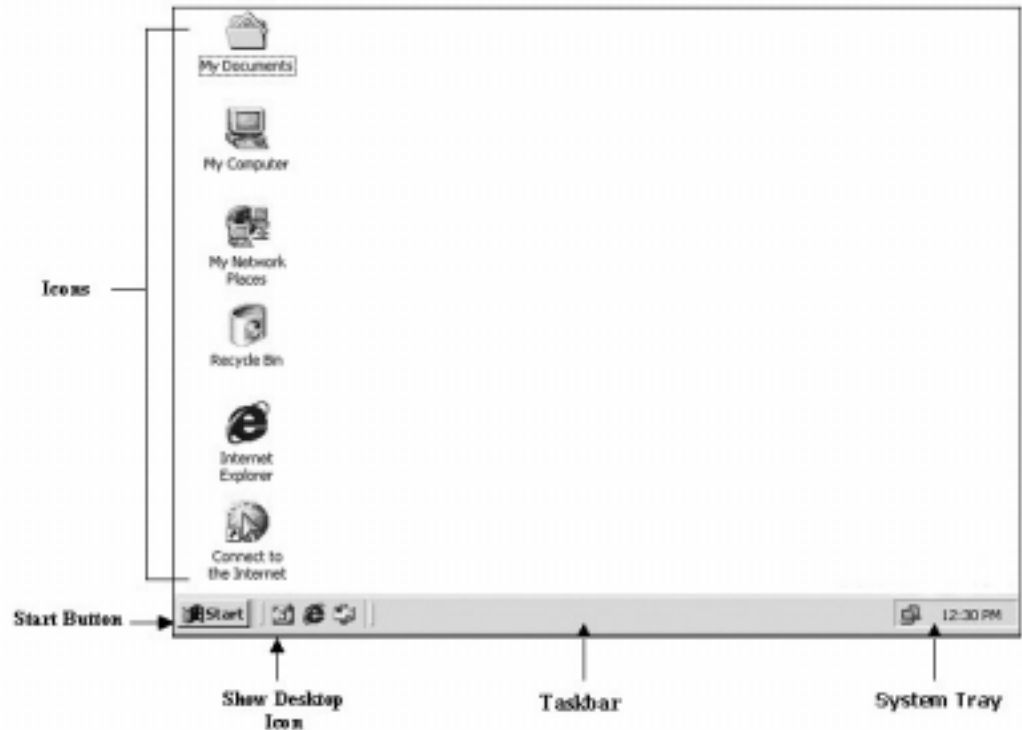




Figure 1-1: The Windows 2000 Desktop

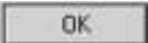
FACILITATOR'S NOTES

►► Exercise 1-3**Launching Windows 2000 Administrative Tools**

Many exercises throughout this course will require that you launch administrative tools (or snap-ins). Whenever you are requested to launch an administrative snap-in, follow these simple steps:

- 1 Right-click a free area on the taskbar, and select .
- 2 Click the  tab.
- 3 Mark the checkbox next to the **Display Administrative Tools** option.

***NOTE:** By default, Windows 2000 Professional does not display the Administrative Tools option on the taskbar. The purpose of the preceding steps was to ensure that you can perform the steps that follow.*

- 4 Click .
- 5 Select **Start | Programs | Administrative Tools**. Notice that several administrative tools are available. To select a tool, simply position your mouse over it and click the left mouse button.
- 6 Click **Start | Settings | Control Panel** to display the *Control Panel* window. Users who have experience with previous Windows versions will recognize many of the icons that appear in control panel and also notice some icons that are unique to Windows 2000.
- 7 Close the Control Panel.

Exercise Summary: You have briefly visited some of the configuration utility areas of Windows 2000 Server. As you can see, they are quite similar to those in Windows 2000 Professional.

FACILITATOR'S NOTES

► Exercise 1-4

Viewing the Windows 2000 File System (Complete this exercise from student computers.)

Two main tools are used to manage files and folders in Windows 2000: Windows Explorer and the My Computer interface. Both of these tools enable you to view files and folders that exist on the hard drive, on floppy or CD-ROM drives, or on other computers on the network; however, Windows Explorer allows you to see more information simultaneously and is often the better choice when performing extensive file and folder manipulation.

- 1 Right-click the **My Computer** icon, and select **Explore** to display the *Explorer* view of My Computer.
- 2 Review the Windows Explorer graphic below (Figure 1-2).

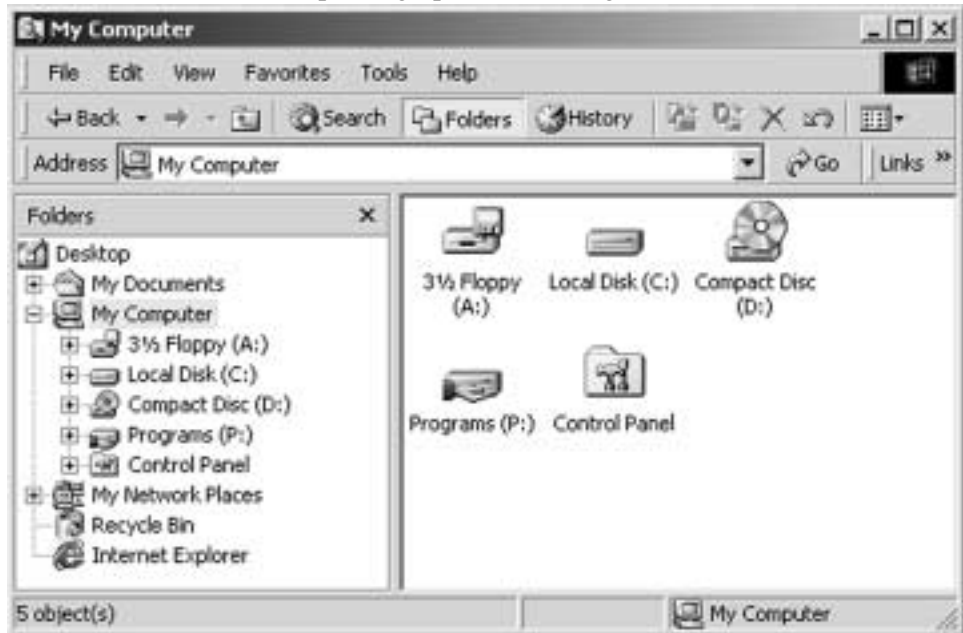



Figure 1-2: Windows Explorer

FACILITATOR'S NOTES

Empty rectangular box for Facilitator's Notes.

- 3 Double-click the **My Computer** icon to display the same information in the standard non-Explorer interface.
- 4 What are some differences between the two interfaces?
- 5 Closing all other dialogues, use the Windows Explorer interface to browse the contents of the C: drive. Scroll until you can see files.
- 6 Click **Tools | Folder options... | View** tab.
- 7 Set your view preferences as desired, and click  .
- 8 What do you notice about the files?

Exercise Summary: You have just used the Windows 2000 Explorer file interface. It will be used throughout this course.

FACILITATOR'S NOTES

Student Internet Guide References

www.books24x7.com

NEXES and Books 24x7 have joined forces to bring you a comprehensive collection of e-books from several of the largest IT book publishers in the world. Using your logon and password that was provided with this textbook, logon to www.books24x7.com and review any or all of the following:

- **Practical Microsoft Windows 2000 Server**

Chapter 1 - What's New in Windows 2000

Chapter 2 - Planning Your Windows 2000 Network

Key Search Terms

Use the following terms when performing searches of e-content (such as internet searches, e-book searching, etc.):

- LDAP
- X.500
- ADS
- WDM
- HAL
- Driver
- Domain
- Workgroup
- Kernel mode
- User mode
- Subsystem
- Posix

FACILITATOR'S NOTES

TechNet Articles

Using your web browser, navigate to www.microsoft.com/technet. Perform a search for the following article numbers:

- Q219005 - Windows 2000:LDAPv3 RootDSE
- Q218185 - Microsoft LDAP Error Codes
- Q221606 - Common LDAP RFCs
- Q234558 - How to Add Support for Multiple Processors in Windows 2000
- Q237556 - How to Troubleshoot Windows 2000 Hardware Abstraction Layer Issues
- Q101501 - Difference Between a Service and a Device Driver
- Q274305 - Free Windows 2000 Resource Kit Tools for Administrative Tasks

Windows 2000 Magazine Articles

Using your web browser, navigate to www.win2000mag.com. Perform a search for the following Instantdoc ID's:

- 7930: Working With Windows 2000
- 9041: Can Win2K and NT 4.0 Coexist?
- 8189: Windows 2000 Launches - Finally!
- 8815: Windows 2000 Professional Features
- 8536: Gearing Up for Windows 2000
- 8297: Welcome to Windows 2000
- 8024: Windows NT and Windows 2000 Coexistence

FACILITATOR'S NOTES

Study Questions

Using the Student Internet Guide references and other resources provided with your student kit, answer the following study questions:

- 1 The Windows 2000 operating system designed as a desktop client OS is called:
_____.
- 2 The Windows 2000 product designed for high end server use is called:
_____.
- 3 The Windows 2000 product that would be ideal for large scale web-site hosting or other process intensive applications is called: _____.
- 4 How many simultaneous inbound dial-up sessions can Windows 2000 Server support?
 - a 1
 - b 10
 - c 256
 - d 512
 - e Unlimited
- 5 By default, how many processors can Windows 2000 Server support?
 - a 1
 - b 2
 - c 4
 - d 8
 - e 16
- 6 The Windows 2000 Server operating system architecture is divided into two sections, known as: _____.

FACILITATOR'S NOTES

- 7 Environmental subsystems run in:
 - a User mode
 - b Kernel mode
- 8 Which of the following are environmental subsystems of Windows 2000 Server:
 - a Posix
 - b WOW
 - c Win32
 - d OS/2
 - e Macintosh
- 9 EMA is part of Windows 2000 Advanced Server and Windows 2000 Datacenter server, and stands for: _____.
- 10 List three of the components of the Windows 2000 Server Executive layer.
_____.
- 11 HAL stands for _____.
- 12 Which Microsoft networking model is best for small numbers of computers that don't need centralized administration? _____.
- 13 Which Microsoft networking model is best for large numbers of computers needing centralized administration and security? _____.
- 14 There can be more than one BDC on a network.
 - a True
 - b False
- 15 A grouping of one or more trees is known as a: _____.

FACILITATOR'S NOTES

- 16 A situation whereby Domain A trusts Domain B, and Domain B trusts Domain C, thereby Domain A trusts Domain C is known as:
_____.
- 17 A Windows 2000 Server that is not configured as a domain controller is referred to as a: _____.
- 18 Windows 2000 Active Directory Services supports which directory access protocol?
_____.
- 19 List three forms of naming formats supported by Windows 2000 Directory Services.

_____.
- 20 List two components of the Windows Driver Model (WDM):
_____.

FACILITATOR'S NOTES

